

DATE

CLAYMORE CLOTHES 1982 LTD.
1201 EAST PENDER ST. VANCOUVER BC,
V6A 1W7

DATE REQUIRED

TRY-ON DATE

CUSTOMER NAME

ADDRESS

HOME PH.

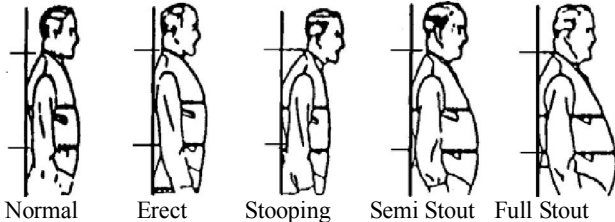
WORK PH.

FAX

NOTES

Koe Level Neck and Seat Indent

Mark Customers Attitude Clearly on Reverse Side



Normal

Erect

Stooping

Semi Stout

Full Stout

MUST FILL IN

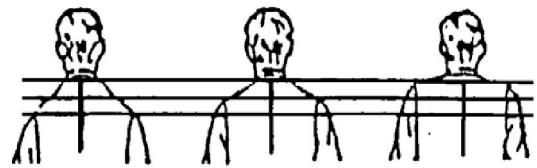
2 PC 3 PC PANTS VEST MESSKIT HEIGHT WEIGHT NECK ARMY NAVY AIR FORCE

Branch _____ Rank _____

SHOULDERS

Left Lower Right Lower

Koe Level Shoulders Reading Here Only

Left Right 

Sloping

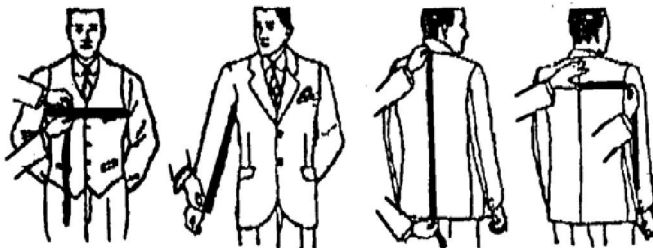
Normal

High

CHEST Regular Full Flat BACK Regular Narrow Wide SEAT Regular Prominent Flat EDGES Bluff Machine

COMMENTS/ SPECIAL INSTRUCTIONS

SPECIAL INSTRUCTIONS:



Chest

Sleeve

Length

Back

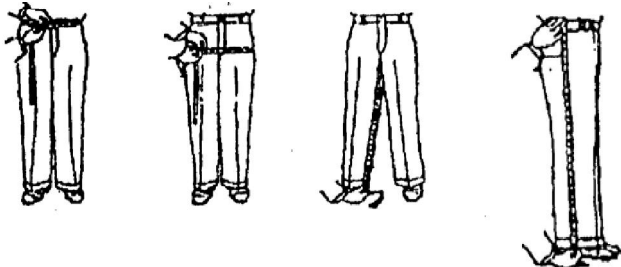
Tape high up under arms over blades in back. Snug not tight

From arm hole seam down sleeve to length wanted

From collar seam to exact length wanted

From center seam to shoulder seam as shown

MEASUREMENTS FOR PANTS



Waist

Seat

Inseam

Outseam

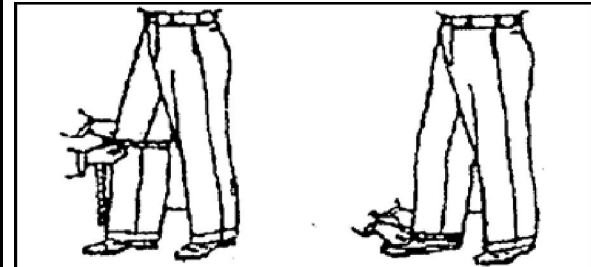
Aroud body over the shirt just above waistband snug but not tight

Around fullest part of seat. Snug but not tight

From snug up in Crotch to exact length wanted

From top of waistband to full length.

MEASUREMENTS FOR KNEE & BOTTOM



Knee

Bottom

As shown. Give exact width wanted.

Around bottom as shown. Give exact width wanted.