

Customer's Name .....  
Customer's Address .....  
Date to be Shipped.....  
Is Order to be Shipped to Customer?.....  
C.O.D.?.....  
1st Choice.....  
2nd Choice.....

**COAT**

**WAIST LENGTH**  
From 1 to 2 (Fig. 2)

**PULL LENGTH**  
From 1 to Length Desired

**WIDTH OF BACK**  
From X to X (Fig. 2)

**INSIDE SLEEVE LENGTH**  
From 4 to 5 (Fig. 1)

**CHEST**  
Around C (Fig. 1) Tape well up under arms

**BUST**  
Around B (Fig. 1)  
Tape well up around blade, fullest part of bust

**LOW BUST**  
Place tape at 1 around neck 3 to full-est part of bust 6

**FRONT LOW WAIST**  
Continue from 6 to 7

**Half Back**  
Measure largest part of upper arm at M

If we have made clothes for this customer previously, please give date and Order No.

**COAT STYLE No.** .....

**Style of Pockets** .....

**TRY ON?** .....

**TOPCOAT**  
To be worn over jacket  
YES..... NO.....

**COAT—Medium, Loose, Snug**  
Give size of dress worn by customer.

**SKIRT STYLE No.** .....

**SKIRT**

**WAIST (W)**

**HIP (H), 4" Below W**

**LOW HIP (LH), 9" Below W**

**FRONT LENGTH**  
From 8 to floor (Fig. 1)

**BACK LENGTH**  
From 2 to floor (Fig. 2)

**FINISHED LENGTH**  
From 2 below band to length desired

Specify No. of inches from finished length to floor

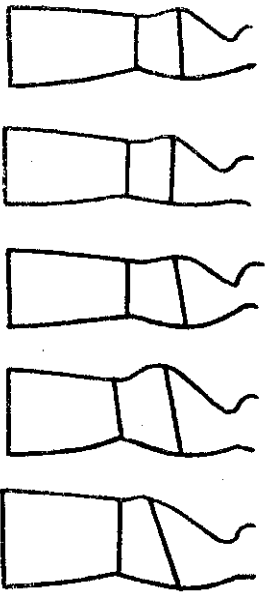
**SLACKS**

Measure outside length from **TOP OF WAISTBAND**. Give exact length wanted.

**RISE**—Take from top of waist-band to chair.

**INSIDE SEAM**

**SLACK STYLE No.** .....



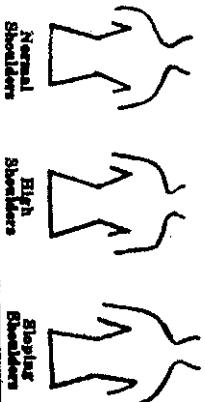
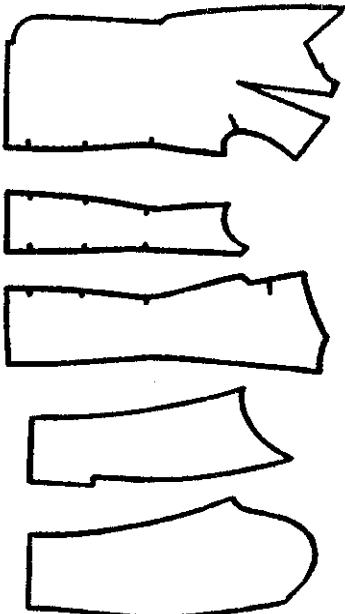
Normal Erect Sloop Prominent Bust & Hips Straddle Waler  
When taking Chest, Bust and Hip measurements, stand behind customer, passing tape over most prominent part. Waist measurement is to be taken snugly, standing in front of customer.

Height? Weight? Age?

Please Do Not Write in This Space — For Designer's Use

**COAT PAT. No.** .....

**SKIRT PAT. No.** .....



**Low Shoulder** —

Which—Right..... Left.....

**Bust** —

Reg..... Full..... Flat.....

**SHOULDERS** —

Wide..... Medium..... Narrow.....

**SLACK PAT. No.** .....

**Invoice No.** .....

**Order No.** .....

**Cloth** .....

**Yardage Used** .....

- Open Bust
- Right Sh. Lower
- Erect
- Raise W..... Pkts. & Btms.
- Square Shld.
- Raise Sh. Pt.
- Lower Bust
- Dip Neck
- Cover Buttons
- Close Bust
- Left Sh. Lower
- Sloop
- Lower W..... Pkts. & Btms.
- Slope Shld.
- Lower Sh. Pt.
- Raise Bust
- Forward Points
- Weltd Holes

FIG. 1

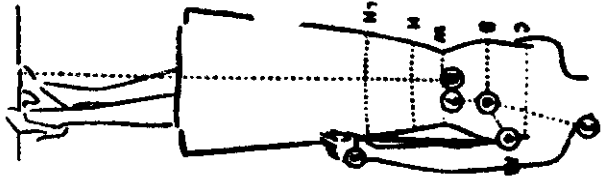


FIG. 2

